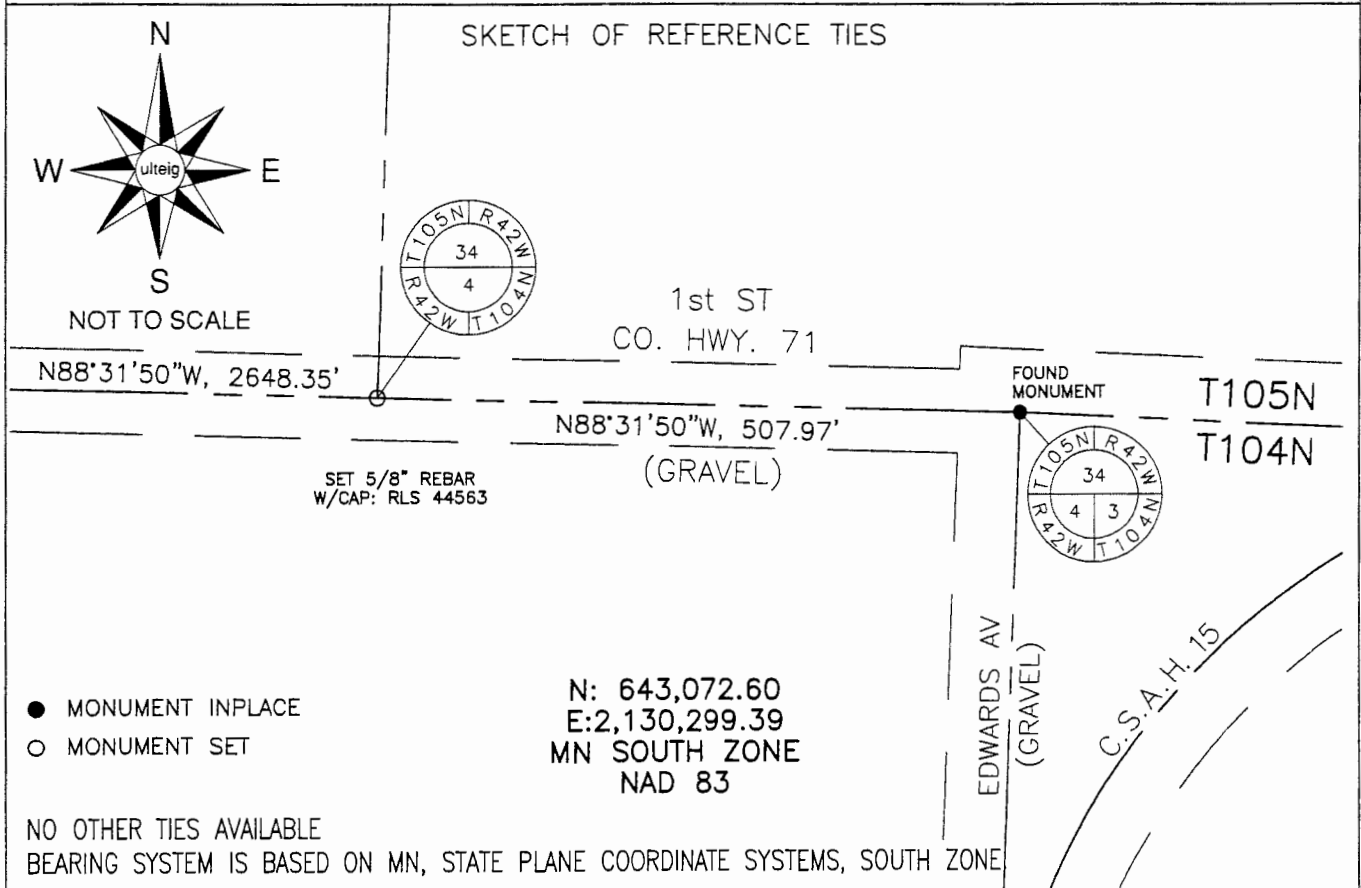


CERTIFICATE OF LOCATION OF GOVERNMENT CORNER

SOUTH 1/4 Corner of Section 34, Township 105N, Range 42W, 5th P.M.
 STATE OF MINNESOTA, County of MURRAY

At the corner location shown on the sketch:

- On _____ found a _____
DATE
- left monument as found, lowered monument, removed monument (explain)
 On 2/03/2006 placed a 5/8" REBAR WITH CAP: RLS 44563.
DATE



Statement of evidence relative to this corner location is on back of page.

I hereby certify that this document and the data contained herein was prepared by me or under my direct supervision.

Thomas V. Zeff 9/27/06
Thomas V. Zeff DATE

Registration No. 44563

- Land Surveyor, Professional Engineer
 County Surveyor, County Engineer

OFFICE OF THE COUNTY RECORDER

County of _____

I hereby certify that this document was filed in
 the Co. Recorders office at _____ .M. on the
 _____ day of SEP 29 2006 A.D., 20____

County Recorder James V. Johnson
 By _____, Deputy

DOCUMENT NO. _____

STATEMENT OF EVIDENCE:

SOUTH 1/4 CORNER, SECTION 34, T. 105 N., R. 42 W.,
MURRAY COUNTY, MINNESOTA

- 1858 W.J. Niely, US. Deputy Surveyor, monumented south township line.
- 2/03/2006 Ulteig Engineers, Inc., Survey Crew, Brian Payne Party Chief found nothing. Set a 5/8" rebar with cap: RLS 44563 in C/L of gravel road, while maintaining harmony of distance calls along township line as per PLSS Township Plat for T104N, R42W, 5th Mer.
Ties: E-507.97' to NE corner, Section 4, T104N;
W-2648.35' to SW corner, Section 34.